

press release

www.rollomaticusa.com

FOR IMMEDIATE RELEASE

Rollomatic spotlights 5-axis pinch/peel grinder with new grinding options for non-round grinding of punches, mold & die components and pins

Mundelein, May 2020. Rollomatic, a leading machine tool manufacturer based in Le Landeron, Switzerland, is highlighting the new ShapeSmart® model NP50 pinch/peel grinding machine with new and innovative capabilities relating to high-accuracy punches and pins, both round and non-round.

Rollomatic as the original inventor of pinch/peel grinding maintains its global leadership position by spotlighting a new model within its line-up of grinding machines. The ShapeSmart® model NP50 has been enhanced with new features and upgrades. The patented option for pinch grinding non-round parts has been improved and now offers higher accuracy and speed. The non-round process includes full pinch/peel grinding which ensures extremely high tolerances, form accuracy and the lowest TIR achievable. This is particularly important for exceptionally thin and long parts. Oblong punches, form punches, squares out of center, corner radiuses and any other shape can be produced with this method. The NP50 is designed and dedicated for cylindrical grinding of carbide, HSS and stainless steel components with emphasis on highest achievable surface finish and concentricity.



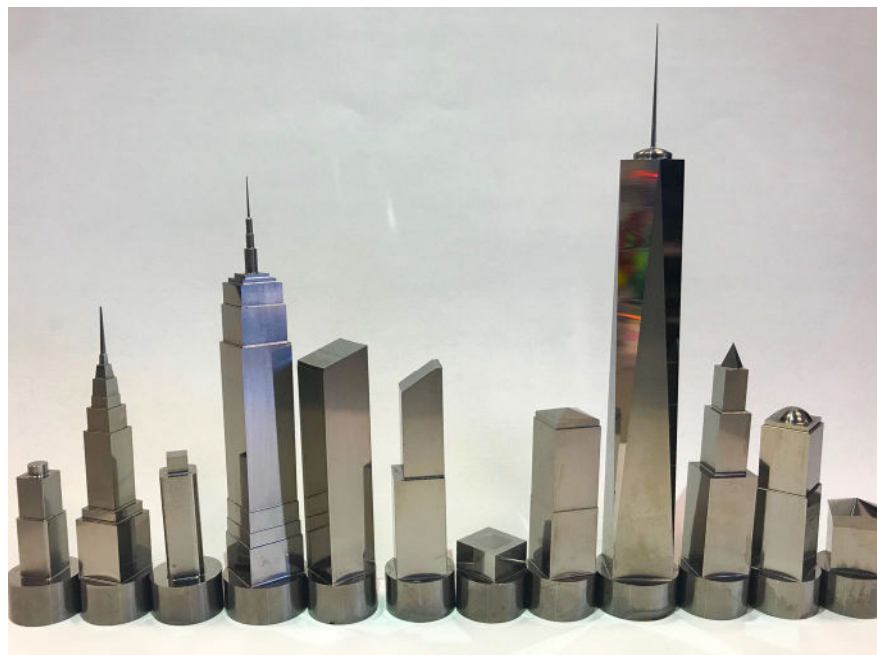
Pins, punches and cutting tool blanks pinch-ground on the ShapeSmart NP50



ShapeSmart NP50 Pinch/Peel Grinder



Top view of the pinch/peel grinding process on the ShapeSmart NP50



New York Skyline of non-round carbide punches ground with the pinch/peel process on the ShapeSmart NP50

Pinch grinding offers highest concentricity particularly on long and thin parts. The rough and finish grinding are performed in one pass. This innovative way to grind roughing and finishing simultaneously eliminates a separate process and reduces cycle time. The machine utilizes two different grinding wheels running on separate spindles and positioned on independently-controlled CNC linear slides.

- Various materials can be ground on this machine such as carbide, ceramics, tool steel, stainless steel and more
- Positioning camera for grinding coolant slots in blanks with coolant through-holes with parts flipper
- Roughing spindle rapid change-over from 0° - 10° - 90°
- Roughing and finishing spindle direct drive, both 20 hp
- Direct-drive workhead for increased accuracy and even better finish
- Option for grinding extra-long parts, for a total grinding lengths of 16" and blank length of 19"
- Marposh in-process gaging and Renishaw pre-probing system
- Form grinding of cutting tools blanks for the industrial, medical and dental market
- Production grinding of precision punches, including non-round
- Production grinding of die & mold components
- Production grinding of parts for the injection molding industry



Carbide precision punch,
square and out-of-round



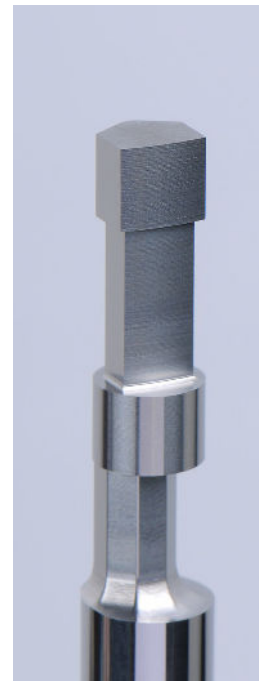
Standard precision punch
in steel



Cold forming tool



Core pin for medical
sampling pipettes



Crank pin

Rollomatic provides outstanding service/support from its North American headquarters in Mundelein, IL, and satellite offices in CA, FL, IN, MA. For more information visit: www.RollomaticUSA.com or e-mail solutions@rollomaticusa.com.



North American Headquarters:
Rollomatic Inc.
1295 Armour Boulevard
Mundelein, IL 60060
Phone: 847 281 8550
E-mail: solutions@rollomaticusa.com